

## Mouse Anti-canine CD3 $\epsilon$ Monoclonal Antibody

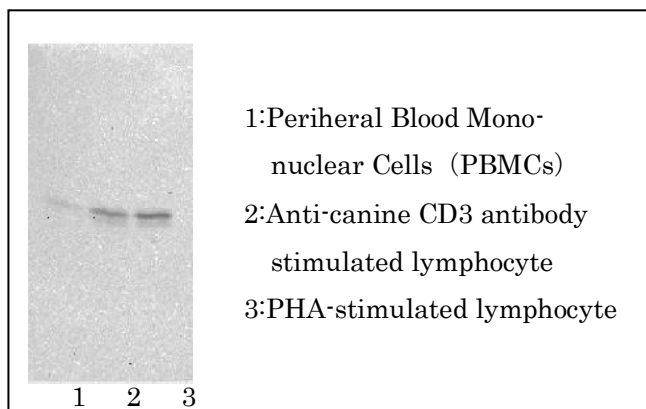
**Product Number :** ABS-070001

**Clone :** 1B9-7-1-1

**Size :** 0.1mg

**CD Number :** CD3  $\epsilon$

**Product Form :** Purified IgG—liquid



**Preparation :** Purified IgG prepared by affinity chromatography on Protein G from culture supernatant.

**Reconstitution Buffer :** Reconstitute with sterile PBS containing 0.09% sodium azide

**Specificity :** This antibody was selected for its ability to detect canine CD  $\epsilon$  molecule in western blots

**Species Cross Reactivity :** Do not react with feline

**Immunogen :** Synthetic protein sequence derived from canine CD3  $\epsilon$

**Ig Isotype :** Mouse IgG1

**Application :**

	Yes	No	Not determined	Suggested working dilution
Western Blotting	<input type="radio"/>	<input type="radio"/>	<input type="radio"/>	1/200—1/1000
Flow Cytometry	<input type="radio"/>	<input type="radio"/>	<input type="radio"/>	
Immunohistology	<input type="radio"/>	<input type="radio"/>	<input type="radio"/>	
ELISA	<input type="radio"/>	<input type="radio"/>	<input type="radio"/>	

Optimal dilutions should be determined by each laboratory for each application.

**Storage :** Store at 4 °C. Do not freeze.

**Reference :** No known reference at this time.

For research use only.